





# 10000 X

New Edition  
**100%**  
new projects



# EUROPEAN ARCHITECTURE



**BRAUN**



01

### Bohemian Paradise Family House

This family house is situated in the central part of the Protected Landscape Area Bohemian Paradise. The location affected the main design concept. Influencing the integration of the house and its garden within the surrounding countryside, by using natural materials such as sandstone, merbau wood or Cembonit roofing. The concept of the house is based on the interconnection of classical forms and a modern approach. It was also necessary to follow the Protected Landscape Area regulatory requirements. The multi-generation house is designed to accommodate for large family gatherings. The interior is opened to the landscape and connects the inside and outside. Large glass windows, an outdoor kitchen, a spacious terrace with a fireplace and a pool communicate with the interior.

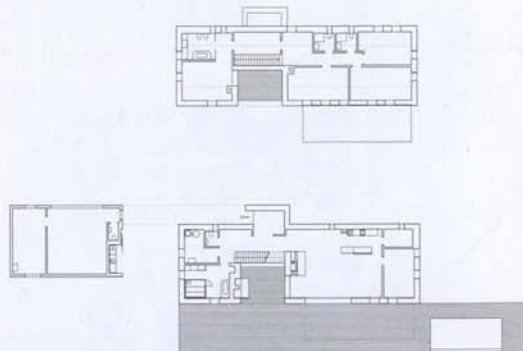
01 Terrace | 02 Exterior view | 03 Entrance hall | 04 Ground floor plan



02



03



04